

TROWBRIDGE FARMS NO. 2

A SUBDIVISION OF PART OF N.E. 1/4 AND PART OF THE S.E. 1/4 OF SEC. 14, T.2 N., R.10E., CITY OF BLOOMFIELD HILLS, OAKLAND CO., MICH.



ALL DIMENSION ARE IN FEET AND DECIMALS THEREOF. ALL CURVILINEAR DIMENSIONS ARE SHOWN ALONG THE ARCS AND THE STREETS AS SHOWN ON SAID PLAT ARE HEREBY DEDICATED TO THE USE OF THE PUBLIC AND THE EASEMENTS AS SHOWN ON SAID PLAT ARE NOT DEDICATED TO THE USE OF THE PUBLIC BUT THE RIGHT TO USE SAID EASEMENTS IS HEREBY RESERVED FOR THE PURPOSES AS SHOWN AND NO PERMANENT STRUCTURES ARE TO BE ERRECTED WITHIN THE LINES OF SAID EASEMENTS. DEFINITION CONTINUES

KNOW ALL MEN BY THESE PRESENTS, that We Henry Yee and Seiko Yee, his wife and the Bank of the Commonwealth, a Michigan banking corporation by Norman E. Kleinert, Vice President and L.W. Doolley, Assistant Vice President as proprietors have caused the land embraced in the annexed plat to be surveyed, laid out and platted to be known as Trowbridge Farms No. 2 a subdivision of part of N.E. 1/4 and part of S.E. 1/4 of Section 14, T.2N., R.10E., City of Bloomfield Hills, Oakland County, Michigan.

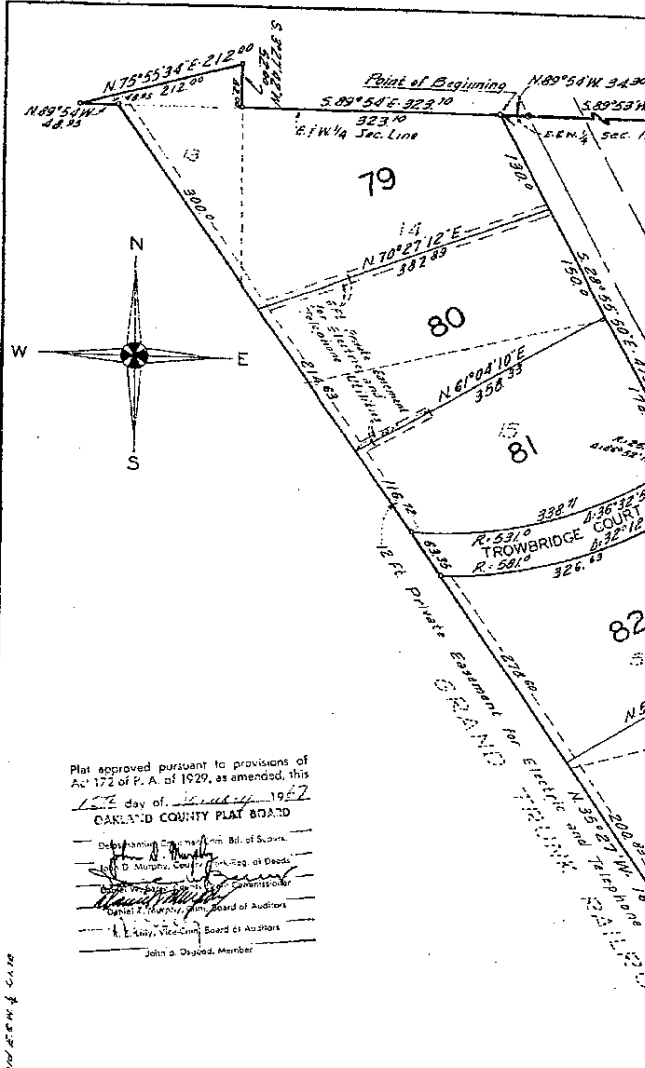
49220

Henry Yee
Henry Yee
Witness
Ray H. Murray
Ray H. Murray, Jr. Witness

Henry Yee (U.S.)
Henry Yee
1155 Kensington Rd.
Bloomfield Hills, Mich.
Seiko Yee (U.S.)
Seiko Yee
1155 Kensington Rd.
Bloomfield Hills, Mich.

The Bank of the Commonwealth
Part of Griswold
Detroit, Michigan
Norman E. Kleinert (U.S.)
Norman E. Kleinert - Vice President
L.W. Doolley (U.S.)
L.W. Doolley - Asst. Vice President

COPY
Notary Office
Ray H. Murray
Notary Public
1155 Kensington Rd.
Bloomfield Hills, Mich.
Subscribed and sworn to before me on this 29th day of April, 1967.
Ray H. Murray
Notary Public



Plat approved pursuant to provisions of Act 172 of P.A. of 1929, as amended, this 12th day of April, 1967
OAKLAND COUNTY PLAT BOARD
John A. Doolley, Member

I hereby certify this plat to be a correct and true copy of the original map as filed in the office of the State of Michigan on this 29th day of April, 1967.
Richard A. Doolley
Richard A. Doolley
Notary Public

Allison Green
Allison Green
STATE TREASURER
By *Nickolas J. Doolley*
Notary Public

RESOLUTION
The land embraced in the annexed plat of "TROWBRIDGE FARMS NO. 2" a subdivision of part of N.E. 1/4 of Sec. 14, T.2N., R.10E., City of Bloomfield Hills, Oakland Co., Michigan, being in part, parts of Sections 13, 14, 15, 16, 17, 18, 19, 20, 21 and 22 and vacated Bretton Lane of Trowbridge Farms a subdivision of parts of the S.E. 1/4 of Sec. 14, the S.W. 1/4 of Sec. 13 and N. 1/4 of section 21, T.2N., R.10E., City of Bloomfield Hills and Bloomfield twp. Oakland Co., Michigan, is designated as beginning at a point on the E. & W. 1/4 section line of said Section 14, thence S. 89° 53' 14" W. 34.30 ft. to the E. 1/4 corner of said Section 14, thence S. 88° 55' 50" E. 175.20 ft., thence S. 87° 14' 50" W. 1200.02 ft., thence S. 86° 13' 14" W. 191.62 ft., thence S. 85° 59' 14" W. 320.15 ft. to the easterly right-of-way line of the Grand Trunk Western Railroad, thence along said easterly right-of-way N. 35° 27' 14" W. 26.44 ft. to the N. 3° 44' 44" W. 256.13 ft., and N. 35° 27' 14" W. 1660.45 ft., and N. 89° 54' 14" W. 48.5 ft., thence S. 75° 55' 14" W. 212.0 ft., thence S. 3° 27' 14" W. 52.0 ft., thence S. 89° 54' 14" E. 323.10 ft. to the point of beginning. This plat contains 9 lots numbered 79 to 87 both inclusive.

SURVEYOR'S CERTIFICATE:
I hereby certify that the plat hereon delineated is a correct one and that permanent metal monuments consisting of iron rods at least one half inch in diameter and thirty-six inches in length enclosed in a concrete cylinder at least four inches in diameter and thirty-six inches in length have been placed at all points marked thus "o" as thereon shown at all angles in the boundary of the plat, at the intersection of lines of streets, and at the intersection of the lines of streets with the boundaries of the plat as shown on said plat.

PREPARED AND DRAFTER BY
Bernard Feldhauser
Bernard Feldhauser
Registered Land Surveyor No. 10685
Birmingham, Michigan

CERTIFICATE OF MUNICIPAL APPROVAL
This plat was approved by the City Council of the City of Bloomfield Hills at a meeting held February 15, A.D. 1966 and is in compliance with Section 19a of Act. 130 of the Public Acts of 1961 and the width of lots conform with requirements of Sec. 30, Act 172 of 1929 as amended.
Robert J. Stadler
Robert J. Stadler
Clerk

ACKNOWLEDGMENT
STATE OF MICHIGAN) S.S.
COUNTY OF OAKLAND)
On this 29th day of FEBRUARY A.D. 1967, before me, a Notary Public in and for said County, appeared Norman E. Kleinert and L.W. Doolley to be personally known, who being each by me duly sworn did say that they are Vice President and Assistant Vice-President respectively of The Bank of the Commonwealth, a Michigan banking corporation and said instrument was signed in behalf of said corporation by authority of its Board of Directors and the said Norman E. Kleinert and L.W. Doolley acknowledged said instrument to be the free act and deed of said corporation. Also appeared Henry Yee and Seiko Yee, his wife known to me to be the persons who executed the above delineation and acknowledged the same to be their free act and deed.
Notes: Corporation has no seal.
Ray H. Murray
Ray H. Murray, Jr.
Notary Public, Oakland County
APR 29 1967
My Commission Expires